



# Christmas Stocking/Mitten/Gift Box

## Gift Card Holder

This Quilt-as-you-go Christmas Stocking/Mitten/Gift is a great size for a gift card, and maybe even some small candies.

### Materials:

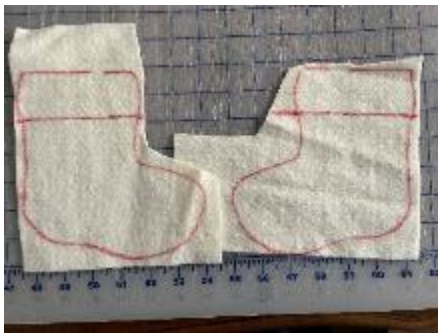
	Stocking	Mitten	Gift Box
Batting for body	2 - at least 6.5" x 7 "	2 - at least 6.5" x 7 "	2 – at least 4" x 5"
Cotton fabric for lining	2 – 5"x7", cut from template	2 - 3.5" x 5.5"	2 – 3.5" x 4.5"
Fleece or batting for the cuff	2 rectangles 2 1/2" x 5"	2 rectangles 2 1/2" x 5"	NA
Ribbon to sew on batting	NA	NA	2 - 5"
Ribbons to tie stocking closed	2 – 7" of 1/4" wide (or 8" if 1/2" wide)	2 – 7" of 1/4" wide (or 8" if 1/2" wide)	2 – 7" of 1/4" wide (or 8" if 1/2" wide)

### For All Versions:

- Cotton fabric scraps for your Quilt-As-You-Go (strips, rectangles and squares are easiest). These will cover the template on the above batting, except for the cuff.
- 3" of twill tape or ribbon or 1-1.5" wide piece of fabric by at least 3" long (see instructions for fabric assembly), for the hanger
- marking pen (such as a Sharpie marker) to mark batting
- Pencil or other marking tools for light and dark fabrics.
- Point turner (chopstick works great – and an excuse to have Chinese takeout!)
- Pinking shears (optional) or sharp scissors to clip curve.
- The templates for the stocking and the lining.

# Instructions

NOTE: There is a Quick Checklist at the end.



**TRACE:** On the two pieces of quilt batting, trace the full stocking template on to each, BUT MAKE SURE THEY ARE GOING IN OPPOSITE DIRECTIONS (See Picture below). **And don't forget the line too.**

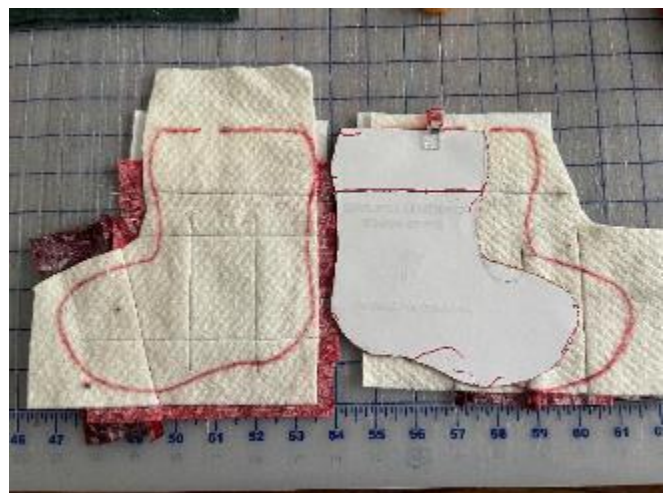
**QAYG:** Now you can get creative and cover the front and back of the stocking under the top line with Quilt-As-You-Go (QAYG). The trick is to plan it out so you don't have any exposed seams at the end except outside the stocking outline. The easiest way to start is just strips running across or down the entire stocking until you are more confident. Place the first strip face up, and then place the next one face down with the edges together on one side. Stitch  $\frac{1}{4}$ " from the edge where the join, then flip the second strip to see the right side of the fabric. Continue until the entire stocking main section is covered. But if you are braver, try fussy cutting a focus fabric on the center of the stocking front. Make sure you cover at least  $\frac{1}{4}$ " over the top line and over all the outside lines.



OR, if you don't want to QAYG, you can cover the entire stocking in one fabric. But if you do, you should probably add some straight line quilting or Free-motion quilting to secure the fabric to the batting.



**CUFF:** Add the fleece/batting 2 1/2" x 5" pieces to cover above the line. I find the easiest way for me is to locate the line from the pattern, then mark  $\frac{1}{4}$ " above it. Then line a long edge of the Fleece/batting to this new line, stitch  $\frac{1}{4}$ " from there and then flip up the fleece/batting.



**Gift Ribbon:** For the Gift Box/Package, add a ribbon up the center of the package that will later line up with the top ribbons.



**RE-MARK:** Place the pattern back over the stocking on the front or the back (I prefer to use the batting side). The key is to line up the line on the pattern with the stitching for the cuff of the stocking.



**CUT:** Cut out the stockings on the lines. You now have the outsides!

**TACK RIBBON:** Note the center of the top of each stocking piece. Take a piece of 7" of ribbon and line one end of the ribbon with the top of the stocking, so that the ribbon runs down the front of the stocking (see picture). Pin in place. Put the 2 stocking pieces right sides together and make sure the 2 ribbons line up with each other. If you like, you can tack them in place and remove the pins.



**TAPE:** The ribbon is long and you don't want to catch it in the seams later, so tape, pin, or clip it so it doesn't get caught in the other seams during assembly. But if you use pins, be careful later when turning the piece right side out...don't stick yourself with the pins!

**TACK LOOP:** OPTIONAL for 3" twill or ribbon (next step): If you want to use a piece of fabric instead of twill tape or ribbon, then fold the fabric **WRONG** sides together lengthwise (3" + side) and press. Then open up the piece, and on each side of the fold, fold the outside edge up to the fold **WRONG** sides together and press. Then refold the center as well and press the final strip. If you remember the old bias or binding tape, it should now look like this. Stitch it closed about 1/8" from the open edge.

Take the 3" piece of twill/ribbon/fabric strip and fold it in half with the best side outside. On the outside edge of the cuff, on the end **AWAY** from the toe (the back of the stocking) on an outside piece (either will work), pick a point on the cuff about halfway between the top and the start of the fabric stocking. Line up the raw edges of the twill/ribbon/fabric strip loop with the back edge of the stocking at the point you picked. Pin/clip or tack in place.

**CUT:** Place the 2 pieces of fabric for the lining wrong sides together. Trace the template onto the stack and cut them out. You should now have 2 linings that are the opposite of each other. Note the template tells you which end points toward the toe of the outside.

**SEW LINING:** Take one of the outside stocking pieces and place it face up. Then place a lining piece face down on top of it, making sure it is the one with the toe pointing toward the toe of the stocking piece! Line up the tops and stitch  $\frac{1}{4}$ " long the top ONLY. Repeat for the other outside/lining pair.



**FINAL ASSEMBLY:** Take one of the stocking/lining pairs, open it up, and place it down with the right sides facing up. Open the other pair and place it on top face down (RIGHT SIDES together). The first pins/clips should be to line up the cuff/lining seams to each other on each side, and line up the bottom of the cuffs to each other. Then finish pinning/clipping the rest of the edges.

Mark an opening about 3 inches on the straight side of the lining. This will be used to turn the stocking in a later step. Stitch around the rest of the stocking, trying to preserve a round shape around

the toe of the stocking, and leaving the opening on the straight side of the lining. Backstitch both ends of the seam.

**CLIP:** There is an interior curve on the stocking where the straight top turns toward the toe (inside curve). For best results after turning, **clip 2 or 3 spots** on the curve or use the pinking shears. But don't cut the seam stitching! If you do, stitch over the seam again inside the cuts. If you don't clip, you will get a pucker at the "inside elbow" of the stocking.

For the Mitten, clip where the main mitten meets the finger.

For the Gift Box, clip the corners off.



**TURN:** Turn the stocking through the opening. Use a turning tool (or chopstick) on the points and curves to open all the seams in both the stocking and the lining. You can remove anything you used to hold the ribbon strings now as well.

**SEAM LINING:** Finger press, or iron, the lining straight edge so it closes with a ¼” turned in. Stitch 1/8” from the end to close the opening. Don’t worry, it will be hidden inside the stocking.

**TUCK:** Tuck the lining into the interior of the stocking.

**TIE:** You can also tie the top ribbons into a bow now to close the stocking. Voila! Done!



## QUICK CHECKLIST:

- TRACE TEMPLATE ON BATTING
- QAYG (CUFF LAST, IF APPLICABLE)
- CUFF OR GIFT RIBBON ATTACHMENT
- RE-TRACE TEMPLATE
- BASTE CLOSE TO CUTTING LINE
- CUT
- TACK RIBBON
- TAPE RIBBON OUT OF THE WAY
- TACK LOOP
- CUT LINING
- SEW LINING
- FINAL ASSEMBLY
- CLIP INNER CURVES
- TURN
- SEAM THE LINING
- TUCK LINING
- TIE RIBBON